

BRINGING ORACLE ZFS STORAGE APPLIANCE VISIBILITY TO ORACLE ENTERPRISE MANAGER

ORACLE ENTERPRISE MANAGER
PLUG-IN FOR ORACLE ZFS STORAGE
APPLIANCE DELIVERS
UNPRECEDENTED VISIBILITY, COST
SAVINGS, PERFORMANCE
ACCELERATION, AND SUPERIOR
DATA PROTECTION

KEY FEATURES

- Easy installation as a plug-in to Oracle Enterprise Manager
- Single pane-of-glass view of Oracle ZFS Storage Appliance systems enterprise-wide
- In-depth displays and online reports with graphics and statistics
- Visibility into Oracle Database file system utilization and storage performance
- Extension of the industry-leading granular visibility and insight of DTrace Analytics

KEY BENEFITS

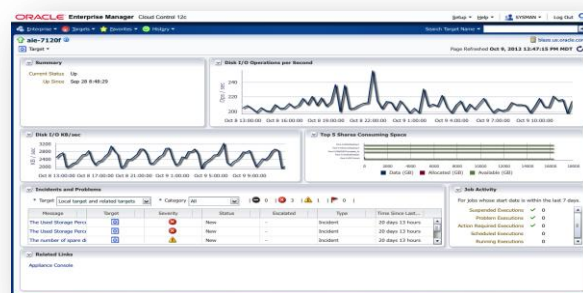
- Improves DBAs' productivity with a highly visual interface into the capacity and performance of Oracle ZFS Storage Appliance systems across the enterprise
- Improves collaboration between storage administrators and DBAs
- Reduces time to identify and resolve issues as well as optimize performance
- Reduces storage complexity and increases user efficiency

Enterprise-wide storage management is a key to success with distributed data-intensive application environments. With Oracle Enterprise Manager Plug-in for Oracle ZFS Storage Appliance, you gain the visibility and tools to monitor your distributed storage from a single console. Oracle ZFS Storage Appliance simplifies storage management with an easy-to-use interface and comprehensive analytics for granular storage performance analysis. By combining these tools, database and storage administrators can collaborate to quickly identify and resolve issues, improving productivity and operational effectiveness.

Simplicity in an Increasingly Complex Storage Infrastructure

Distributed storage architectures introduce complexity within the infrastructure, management, and support environments. As data proliferates, simplifying the day-to-day activities related to monitoring and managing storage is critical. Oracle Enterprise Manager enables the management and monitoring of distributed instances of Oracle Database and storage platforms from a single console. With the introduction of the Oracle Enterprise Manager Plug-in for Oracle ZFS Storage Appliance, database administrators (DBAs) and storage administrators now have an “at-a-glance” view into database and storage availability, capacity utilization, and performance of Oracle ZFS Storage Appliance systems distributed across the enterprise.

The plug-in is easy to install in minutes. After a simple download and point-and-click configuration on Oracle ZFS Storage Appliance and Oracle Enterprise Manager, the deployment is complete, and the console is ready to use.



Empowering Storage and Database Administrators

The Oracle ZFS Storage Appliance further empowers your IT staff with a feature that enables storage administrators to define administrative roles for DBAs and other key personnel. This feature facilitates teamwork and increases productivity of DBAs, storage administrators, system administrators, and operations managers—as they collaborate to rapidly detect and resolve application issues.

Actionable Analytics with Oracle ZFS Storage Appliance Software

With Oracle’s ability to export metrics captured by the DTrace Analytics feature from Oracle

ZFS Storage Appliance to Oracle Enterprise Manager, Oracle provides unmatched, instant visibility, and ease of use to monitor your distributed Oracle ZFS Storage Appliance systems from a single console. A DBA or storage administrator now has access to an easy-to-read graphical dashboard in the Oracle Enterprise Manager console that displays key metrics and analytics enabling deep insights into performance, capacity utilization, and availability of Oracle Database on Oracle ZFS Storage Appliance. Furthermore, critical system alerts are captured in the Oracle Enterprise Manager console to ensure visibility of potential hardware errors.

Complementing the capabilities of Oracle Enterprise Manager, DTrace Analytics enables you to drill down to the VM and I/O level and obtain a graphic display of a number of critical metrics, such as storage capacity, cache utilization, network



bottlenecks, performance, and client information, providing you a detailed view of storage operations and performance-related metrics.

Savings That Go to the Bottom Line

Oracle ZFS Storage Appliance is unprecedented in many ways, and from a cost perspective, it is unique. In contrast to competitive products, Oracle ZFS Storage Appliance includes a rich set of data services, including built-in compression and thin provisioning, as well as breakthrough technologies that are provided at no extra cost to deliver superior price/performance and lower your capital expenditures. Likewise, downloading, installing, deploying, and using Oracle Enterprise Manager Plug-in for Oracle ZFS Storage Appliance is free.

In addition, Hybrid Storage Pool, a feature of Oracle ZFS Storage Appliance, provides breakthrough performance by powering storage and database clients with the speed advantage of DRAM and flash SSD storage performance at the cost efficiency of SAS-3 hard disk drives. This lowers your costs further by minimizing the number of spindles you have to purchase to generate the performance you need for your business-critical applications.

Enterprise-Wide Visibility and Optimization

Inability to optimize performance and maximize data availability from application to storage can have a direct impact on your business through lower productivity and lost sales opportunities. Oracle Enterprise Manager Plug-in for Oracle ZFS Storage Appliance provides enterprise-wide visibility with deep insight into storage infrastructure components so that you can easily optimize your application-to-storage performance. In addition, bringing metrics captured by the powerful DTrace Analytics into the Oracle Enterprise Manager framework increases availability through rapid identification and resolution of storage bottlenecks and other issues that can affect your data center operations.

By encouraging collaboration among your DBA, system administrator, and storage administrator, database and storage issues can be addressed faster, giving your IT staff time to focus on revenue-generating, strategic applications instead of infrastructure support. Now you can stop making piecemeal optimizations and start transformative improvements by using Oracle Enterprise Manager Plug-in for Oracle ZFS Storage Appliance to monitor your enterprise-wide Oracle ZFS Storage Appliance deployments.

Contact Us

For more information about Oracle Enterprise Manager or Oracle ZFS Storage Appliance, visit oracle.com or call +1.800.ORACLE1 to speak to an Oracle representative.



Copyright © 2014, Oracle and/or its affiliates. All rights reserved.

This document is provided for information purposes only, and the contents hereof are subject to change without notice. This document is not warranted to be error-free, nor subject to any other warranties or conditions, whether expressed orally or implied in law, including implied warranties and conditions of merchantability or fitness for a particular purpose. We specifically disclaim any liability with respect to this document, and no contractual obligations are formed either directly or indirectly by this document. This document may not be reproduced or transmitted in any form or by any means, electronic or mechanical, for any purpose, without our prior written permission.

Oracle and Java are registered trademarks of Oracle and/or its affiliates. Other names may be trademarks of their respective owners.

Intel and Intel Xeon are trademarks or registered trademarks of Intel Corporation. All SPARC trademarks are used under license and are trademarks or registered trademarks of SPARC International, Inc. AMD, Opteron, the AMD logo, and the AMD Opteron logo are trademarks or registered trademarks of Advanced Micro Devices. UNIX is a registered trademark of The Open Group. 0114

Hardware and Software, Engineered to Work Together